

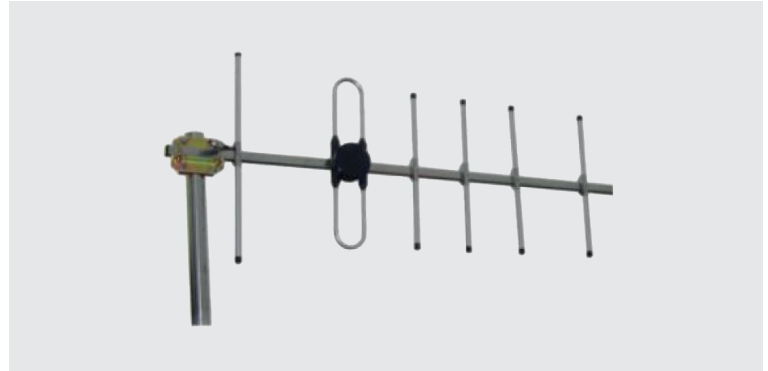
YAGI DIRECTIONAL ANTENNA

450 - 512 MHz

BDA-YDAxxxxxx-9-1

Product Features

- High Selectivity
- Max Power 100W
- Tempered aluminum tubes



Electric Specifications	BDA-YDA450470-9-1	BDA-YDA470490-9-1	BDA-YDA490512-9-1
Frequency Range	450 - 470 MHz	470 - 490 MHz	490 - 512 MHz
Elements	6	6	6
Gain	10.0 dBi	10.0 dBi	10.0 dBi
VSWR	≤2.0	≤2.0	≤2.0
Polarization	Vertical or Horizontal	Vertical or Horizontal	Vertical or Horizontal
Horizontal Beamwidth	48°	48°	48°
Vertical Beamwidth	44°	44°	44°
F/B Ratio	15 dB	15 dB	15 dB
Input Impedance	50 Ω	50 Ω	50 Ω
Max. Input Power	100 W	100 W	100 W
Lightning Protection	DC Ground	DC Ground	DC Ground

Mechanical Specifications	Value
Connector	N Female
Dimensions	900x230x45mm
Weight	0.80kg
Rated Wind Velocity	60 m/s
Reflector Material	Aluminum
Operating Temperature	-40°C to +65°C
Installation	Pole mounting

DOC HON-62096.00 - 11272020 - DMC